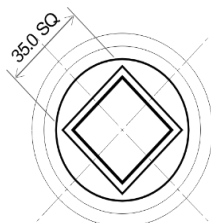
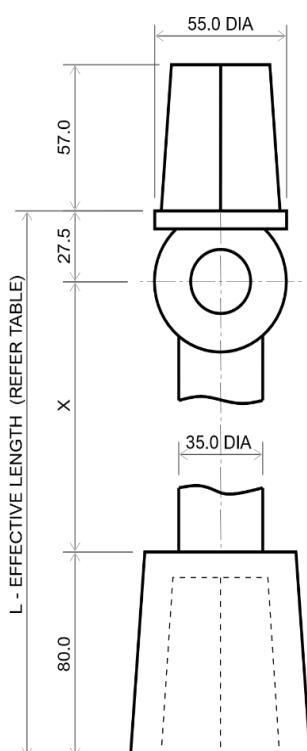


APPLICATION

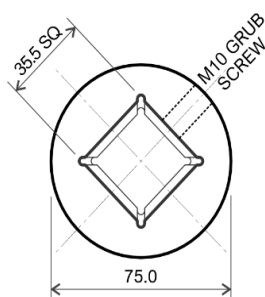
Valve extension spindles are used to raise the valve cap to a position that provides ease of operation.



TOP VIEW



EXTENSION SPINDLE



BOTTOM VIEW



TECHNICAL

Extension Spindles are manufactured to comply with AS/NZS 2638. Spindles are compatible with AS/NZS 2638 Gate Valves DN 80 – DN600.



WSAA Product Appraisal Certificate
Valve Spindle Extensions
PA 2516 CIVILPIPES

DIMENSIONS

EXTENSION SPINDLES – GATE VALVES (AS/NZS 2638)				
L mm	Extension	X mm	Weight kg	Product Code
150		42.5	2.8	VGXS150
225		117.5	3.3	VGXS225
300		192.5	3.8	VGXS300
375		267.5	4.3	VGXS375
450		342.5	4.9	VGXS450
500		392.5	5.2	VGXS500
525		417.5	5.4	VGXS525
600		492.5	5.9	VGXS600
650		542.5	6.3	VGXS650
750		642.5	6.9	VGXS750
900		792.5	8	VGXS900
1000		892.5	8.7	VGXS1000
1200		1092.5	10.1	VGXS1200
1500		1392.5	12.1	VGXS1500

COMPONENTS

PART	MATERIAL
Spindle	Ductile Iron Gr 500-7 AS 1831 (Galvanised to AS 4680)
Lock Screw	M10 x 20 Stainless Steel Gr 316 Grub Screw

CIVILPIPES PTY LTD

ABN 30 168 566 667
2 Potassium St. Narangba Qld 4504
PO Box 304, North Lakes Qld 4509



Web:
civilpipes.com.au



Telephone:
+61 7 3053 3456



E-mail:
sales@civilpipes.com.au

