

## APPLICATIONS

Hydrant Isolation valves are suitable for potable and non-potable water systems installed below and above ground.

The valves are designed to provide a screw down isolation point for attached outlet devices such as air valves and hydrants.

## FEATURES

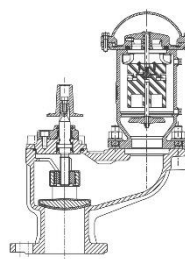
High strength ductile iron body for impact resistance

Corrosion Resistant materials and coatings

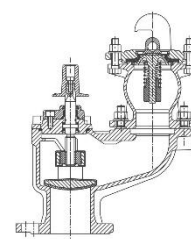
Versatile design for attaching DN 80 – 100 air valves and hydrants

## TECHNICAL DATA

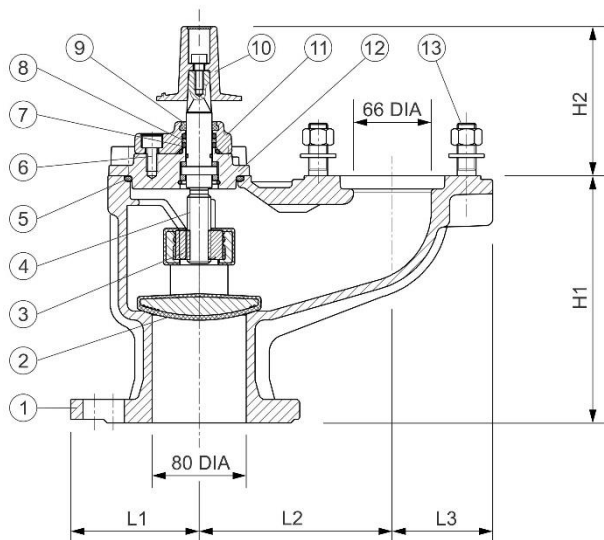
Standard:	NZS 4522 (Lic OMK30048) WSAA Product Appraisal 1817 – Betta Valves PN16
Size Range:	DN 80, DN 100
Pressures:	<b>PN16</b> Operating Pressure 1600 kPa Test Pressure – Seal 1760 kPa Test Pressure – Body 2400 kPa
Temperatures:	Max 80 deg C, Max 40 deg C for potable water systems to AS 4020
Operation:	Screw down - anti-clockwise or clockwise closing
Flange drillings:	PN16 (AS 4087 Fig B5)
Inlet:	Flange with slotted drilling to suit DN80 – 100
Outlet:	Stud Bolts to suit DN 80 or DN 100 flange drilling



Air Valve Isolation



Spring Hydrant Isolation



## DIMENSIONS

INLET FLANGE	OUTLET FLANGE	L1	L2	L3	H1	H2	WEIGHT kg	ACC	CC
PN16 DN 80-100 Slotted	PN16 DN 80	86	164	73	210	126	18	VHIV08	VHIV08C
PN16 DN 80-100 Slotted	PN16 DN 100	86	164	86	210	126	20	VHIV10	VHIV10C

ITEM	PART	MATERIAL	STANDARD
1	Body	Ductile Iron Gr 500-7	AS 1831
2	Disc	Cast Disc WCB EPDM encapsulated	ASTM A216 AS 1646
3	Stem Nut	DR Brass C48600	AS 1565
4	Stem	Stainless Steel Gr 431	ASTM A276
5	Bonnet O-Ring	NBR	AS 1646
6	Bonnet/Body Bolts	Stainless Steel Gr 316	ASTM A276
7	O-Ring Seals	NBR	AS 1646
8	Bushing	DR Brass C48600	AS 1565
9	Dust Cover	EPDM	AS 1646
10	Stem Cap	Ductile Iron Gr 500-7	AS 1831
11	Thrust Collar	Stainless Steel Gr 304	ASTM A276
12	Bonnet	Ductile Iron Gr 500-7	AS 1831
13	Studs, Nuts, Washers	Stainless Steel Gr 316	ASTM A276

## CIVILPIPES PTY LTD

ABN 30 168 566 667  
2 Potassium St. Narangba Qld 4504  
PO Box 304, North Lakes Qld 4509



Web:  
civilpipes.com.au



Telephone:  
+61 7 3053 3456



E-mail:  
sales@civilpipes.com.au

