

APPLICATIONS

Spring Hydrant valves comply with AS 3952 and are suitable for use in potable water and non-potable systems. The valve is operated by means of a standpipe attachment for fire fighting purposes, as well as pipeline flushing and scouring.

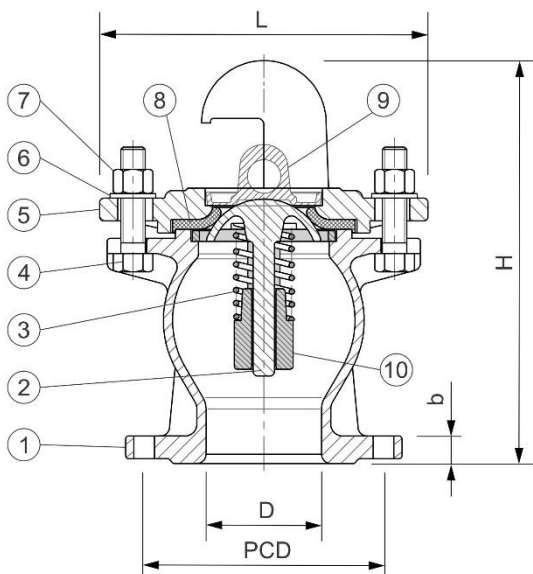
TECHNICAL DATA

Standard:	AS 3952(Lic OMK22026) WSAA Product Appraisal II28 Issue 2 – Betta Valves
Size Range:	DN 80, DN 100
Types:	Standard, Swab
Pressures:	PN16
Temperatures:	Max 60 deg C, Max 40 deg C for potable water systems to AS 4020
End connections:	Flange (AS 4087 Fig B5 PN16)
Options:	Flange with slotted drilling to suit DN80 – 100



FEATURES

- High strength ductile iron body and yoke for impact resistance
- Corrosion Resistant materials and coatings
- Light weight design for easy installation
- Swab style with removable internal components allows access for pipeline scouring
- Dust cover fitted to protect dome and seal



COMPONENTS

ITEM	PART	MATERIAL	STANDARD
1	Body	Ductile Iron Gr 500-7	AS 1831
2	Dome	DR Brass C48600	AS 1568
3	Spring	Stainless Steel Gr 304	ASTM A276
4	Bolt	Stainless Steel Gr 316	ASTM A276
5	Yoke	Ductile Iron Gr 500-7	AS 1831
6	Washer	Stainless Steel Gr 316	ASTM A276
7	Nut	Stainless Steel Gr 316	ASTM A276
8	Resilient Seat	EPDM	AS 1646
9	Dust Cover	PVC	
10	Spring Support	Stainless Steel Gr 316	ASTM A276

DIMENSIONS

STYLE	AS4087 FLANGE	H	L	D	PCD	b	WEIGHT kg	CODE
Swab	80 PN16	264	216	76	146	18	11	VH08SW
Swab	100 PN16	264	216	76	178	20	13	VH10SW
Swab	Slotted 80-100 PN16	264	216	76	146-178	20	13	VH0810SW

CIVILPIPES PTY LTD

ABN 30 168 566 667
2 Potassium St. Narangba Qld 4504
PO Box 304, North Lakes Qld 4509



Web:
civilpipes.com.au



Telephone:
+61 7 3053 3456



E-mail:
sales@civilpipes.com.au

