

## RESILIENT SEATED GATE VALVES

AS/NZS 2638.2

Potable water, non-potable water and wastewater systems

# CONTENTS

▶ VGF – FLANGE PN16 DN 80-375	3
▶ VGF – FLANGE PN16 DN 450-600	4
▶ VGFB – FLANGE BYPASS PN16	6
▶ VGFH – FLANGE PN25	8
▶ VGS – SOCKET PN16	9
▶ VGSF – SOCKET FLANGE PN16	10
▶ VGP – SPIGOT PN16	11
▶ VGG – PE RESTRAINT PN16	12
▶ VGO – RISING SPINDLE PN16	13
▶ PGS02 – PLANET STEM GEARBOX	14



The products shown form part of our continuous improvement program and as such the product designs, specifications and materials may be changed without notice.

All warranties relating to accuracy, completeness, or suitability for any particular purpose and all liability for any loss, damage or costs incurred relating to the use of this information are excluded.



## APPLICATIONS

Resilient seat gate valves comply with AS 2638.2 and are suitable for use in potable water, non-potable water and wastewater systems installed above ground and below ground.

## TECHNICAL DATA

Standard:	AS 2638.2 (Lic OMK25731) WSAA Product Appraisal 1121 Issue 8 – Beta Valves
Size Range:	DN 80 – DN 375
Pressures:	Operating Pressure      1600 kPa (PN 16) Test Pressure – Seal      1760 kPa Test Pressure – Body      2400 kPa
Temperatures:	Max 80 deg C, Max 40 deg C for potable water systems to AS 4020
Coating:	Fusion Bonded coating to AS/NZS 4158
End connections:	Flange (AS 4087, PN16)
Closing options:	Anti-clockwise (ACC) and Clockwise closing (CC)
Options:	Handwheels or Gearbox actuators ISO flange for gearbox actuators Extension spindles

## FLANGE PN16

DN 80 - 375

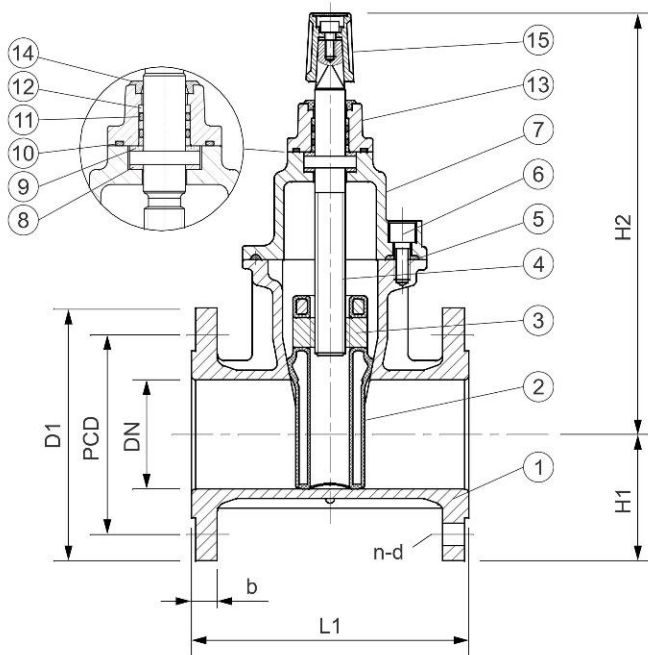


## FEATURES

- High strength and corrosion resistant materials
- EPDM encapsulated ductile iron wedge ensures effective sealing
- Full bore design eliminates blockages
- Anti-friction components for lower operating torques

## COMPONENTS

ITEM	PART	MATERIAL	STANDARD
1	Body	Ductile Iron Gr 500-7	AS 1831
2	Wedge	Ductile Iron Gr 500-7, EPDM encapsulated	AS 1831 AS 1646
3	Stem Nut	DR Brass C48600	AS 1568
4	Stem	Stainless Steel Gr 431	ASTM A276
5	Bonnet Gasket	EPDM	AS 1646
6	Bolts - Bonnet, Dust Cover & Stem Cap	Stainless Steel Gr 316	ASTM A276
7	Bonnet	Ductile Iron Gr 500-7	AS 1831
8	Washer	EPDM	AS 1646
9	Washer	DR Brass C48600	AS 1568
10	Bonnet O-Ring	NBR	AS 1646
11	O-Ring Seals	NBR	AS 1646
12	Thrust Collars	POM	AS 1646
13	Seal Retainer	DN80-150 - SS Gr 316 Other sizes - DI Gr 500-7	ASTM A276 AS 1831
14	Dust Cover	EPDM	AS 1646
15	Stem Cap	Ductile Iron Gr 500-7	AS 1831



## DIMENSIONS

DN	L1	H1	H2	D1	PCD	n-d	b	No Turns	Torque In Nm	Weight kg	ACC	CC
80	203	93	310	185	146	4-18d	18	22	50	16	VGf08	VGf08C
100	229	108	340	215	178	4-18d	20	22	60	18	VGf10	VGf10C
150	267	140	450	280	235	8-18d	23	32	110	34	VGf15	VGf15C
200	292	168	580	335	292	8-18d	23	35	140	66	VGf20	VGf20C
225	305	185	670	370	324	8-18d	24	43	200	88	VGf22	VGf22C
250	330	203	670	405	356	8-22d	24	43	200	95	VGf25	VGf25C
300	356	228	780	455	406	12-22d	30	44	220	135	VGf30	VGf30C
375	381	275	945	550	495	12-26d	33	55	310	255	VGf37	VGf37C

**FLANGE PN16**  
DN 450 - 600

## APPLICATIONS

Resilient seat gate valves comply with AS 2638.2 and are suitable for use in potable water, non-potable water and wastewater systems installed above ground and below ground.

## TECHNICAL DATA

Standard:	AS 2638.2 (Lic OMK25731) WSAA Product Appraisal 1121 Issue 8 – Beta Valves	
Size Range:	DN 450 – DN 600	
Pressures:	Operating Pressure	1600 kPa (PN 16)
	Test Pressure – Seal	1760 kPa
	Test Pressure – Body	2400 kPa
Temperatures:	Max 80 deg C, Max 40 deg C for potable water systems to AS 4020	
Coating:	Fusion Bonded coating to AS/NZS 4158	
End connections:	Flange (AS 4087, PN16)	
Actuator Flange:	F16 ISO 5211 Flange	
Closing options:	Anti-clockwise (ACC) and Clockwise closing (CC)	
Options:	Handwheels or Gearbox actuators Extension spindles	

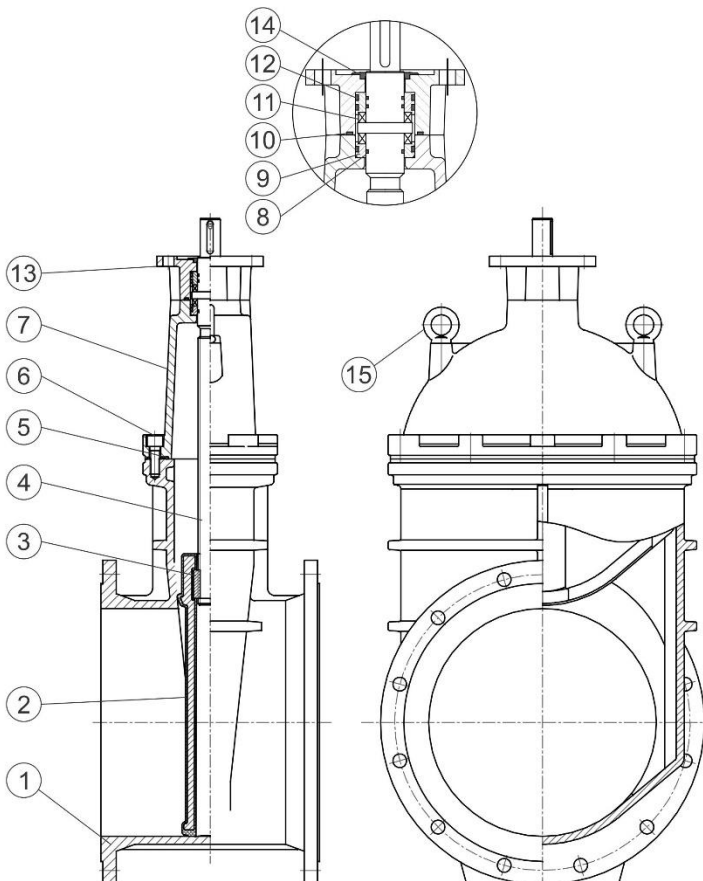


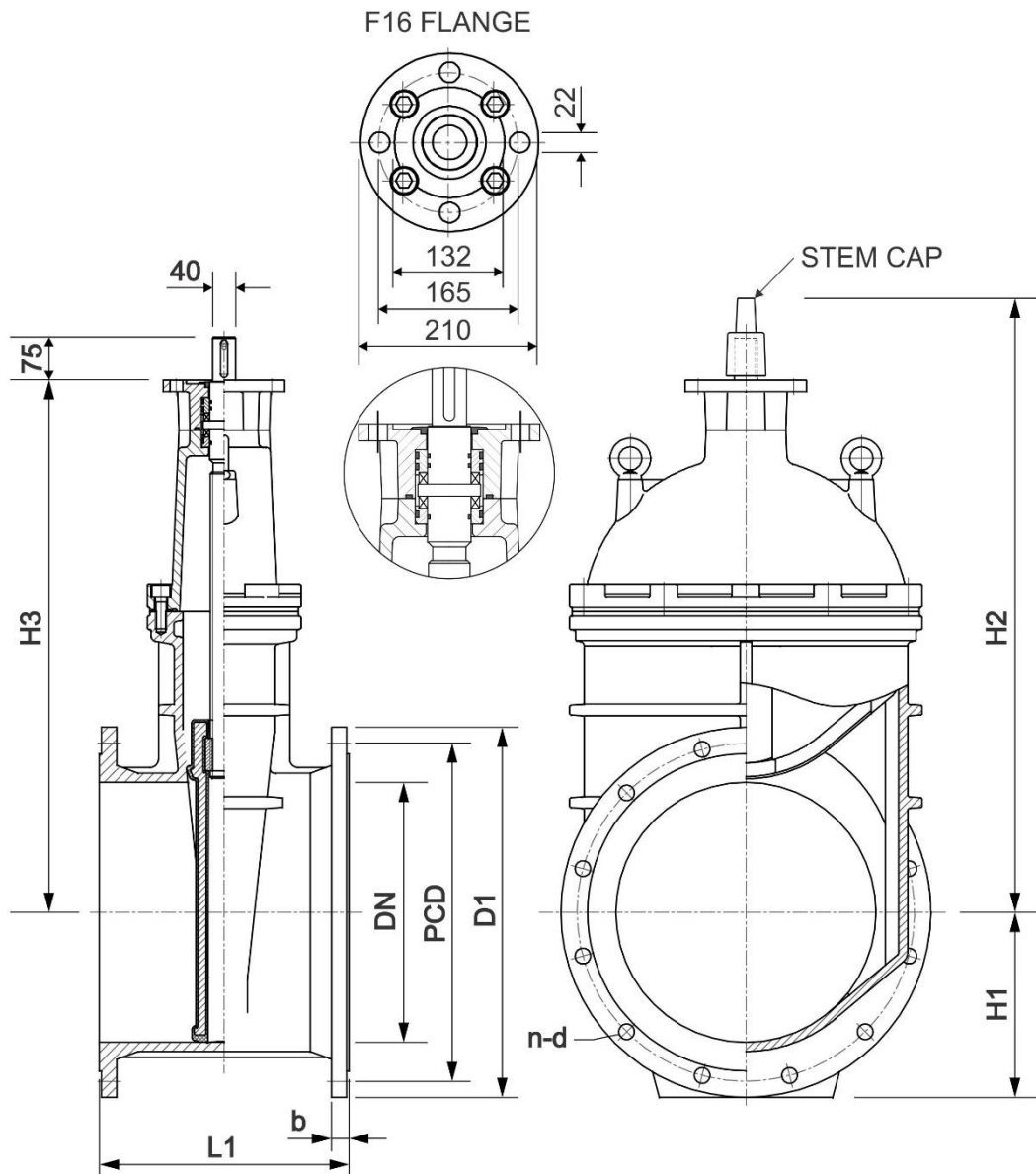
## FEATURES

- High strength and corrosion resistant materials
- EPDM encapsulated ductile iron wedge ensures effective sealing
- Full bore design eliminates blockages
- Anti-friction components for lower operating torques

## COMPONENTS

ITEM	PART	MATERIAL	STANDARD
1	Body	Ductile Iron Gr 500-7	AS 1831
2	Wedge	Ductile Iron Gr 500-7, EPDM encapsulated	AS 1831 AS 1646
3	Stem Nut	Bronze C95210	AS 1565
4	Stem	Stainless Steel Gr 431	ASTM A276
5	Bonnet Gasket	EPDM	AS 1646
6	Bolts - Bonnet, Dust Cover & Stem Cap	Stainless Steel Gr 316	ASTM A276
7	Bonnet	Ductile Iron Gr 500-7	AS 1831
8	O-Ring Seals	NBR	AS 1646
9	Bushing	Bronze C95210	AS 1565
10	O-Ring Seals	NBR	AS 1646
11	Bonnet O-Ring	NBR	AS 1646
12	Bearing		
13	Gland Flange	Ductile Iron Gr 500-7	AS 1831
14	Dust Cover	EPDM	AS 1646
15	Eyebolt	Carbon Steel	Galv




**DIMENSIONS**

DN	L1	H1	H2	H3	D1	PCD	n-d	b	No Turns	Torque In Nm	Weight kg	ACC	CC
450	432	320	1069	920	640	584	12-26d	33	58	420	395	VGF45	VGF46C
500	457	352.5	1180	1031	705	641	16-26d	35	64	500	510	VGF50	VGF50C
600	508	412.5	1334	1185	825	756	16-30d	42	68	535	780	VGF60	VGF60C

## FLANGE BYPASS PN16

DN 450 - 600

### APPLICATIONS

Resilient seat gate valves comply with AS 2638.2 and are suitable for use in potable water, non-potable water and wastewater systems installed above ground and below ground.

### TECHNICAL DATA

Standard:	AS 2638.2 (Lic OMK25731) WSAA Product Appraisal 1121 Issue 8 – Beta Valves	
Size Range:	DN 450 – DN 600	
Pressures:	Operating Pressure	1600 kPa (PN 16)
	Test Pressure – Seal	1760 kPa
	Test Pressure – Body	2400 kPa
Temperatures:	Max 80 deg C, Max 40 deg C for potable water systems to AS 4020	
Coating:	Fusion Bonded coating to AS/NZS 4158	
End connections:	Flange (AS 4087, PN16)	
Actuator Flange:	F16 ISO 5211 Flange	
Bypass Valve:	Resilient Seat PN16 AS 2638.2	
Closing options:	Anti-clockwise (ACC) and Clockwise closing (CC)	
Options:	Handwheels or Gearbox actuators Extension spindles	

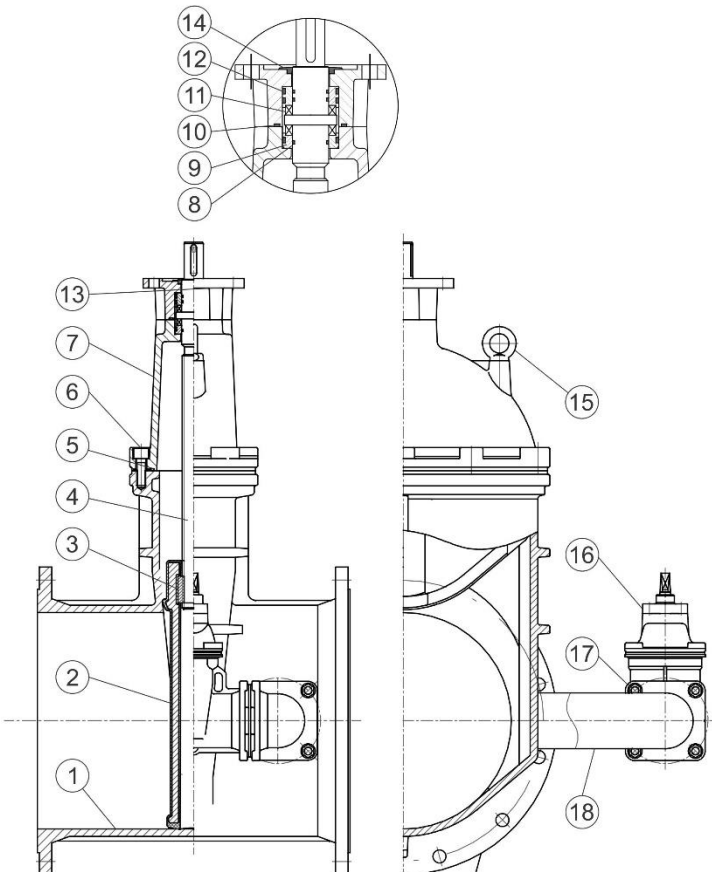


### FEATURES

- High strength and corrosion resistant materials
- EPDM encapsulated ductile iron wedge ensures effective sealing
- Full bore design eliminates blockages
- Anti-friction components for lower operating torques

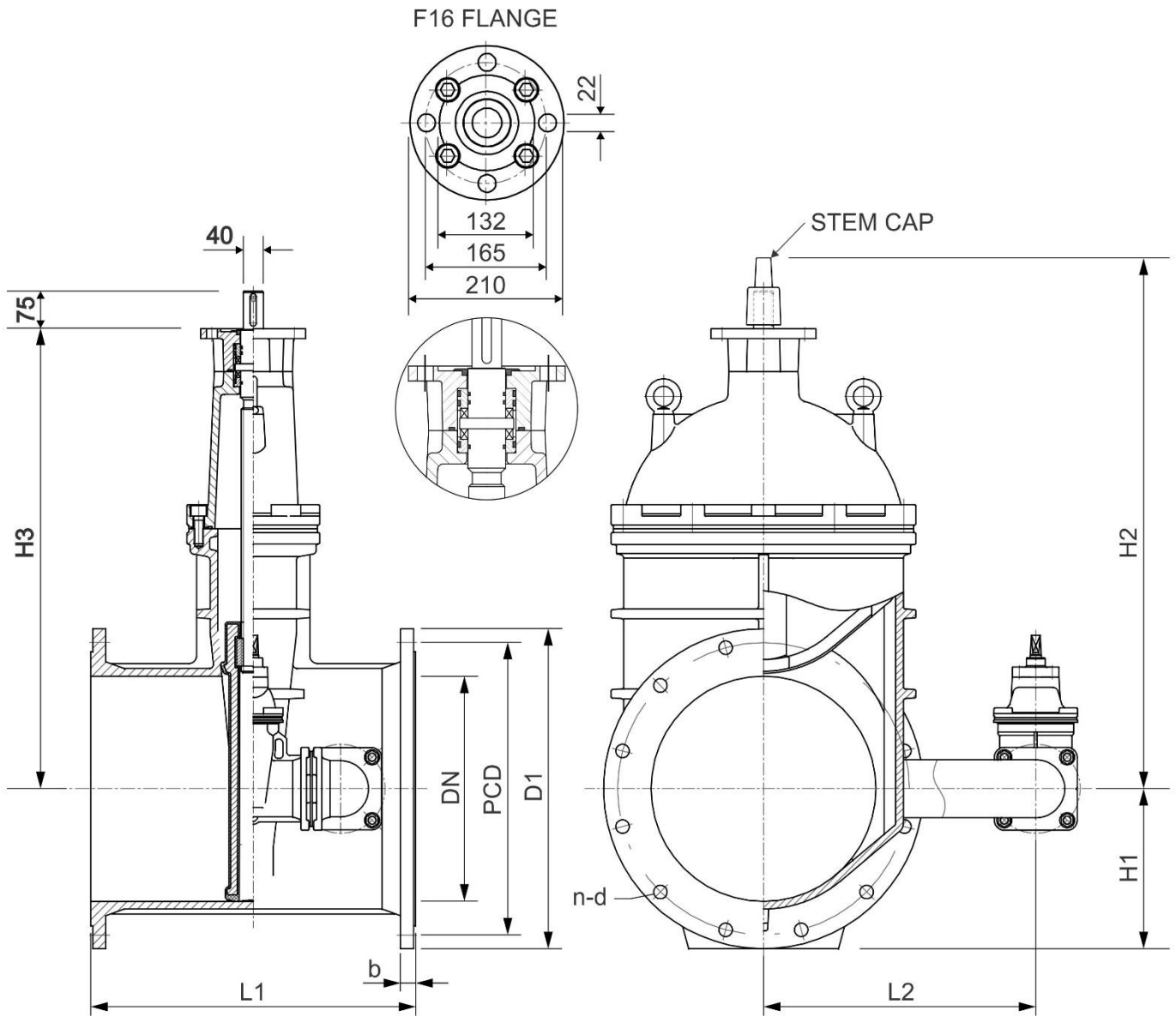
### COMPONENTS

ITEM	PART	MATERIAL	STANDARD
1	Body	Ductile Iron Gr 500-7	AS 1831
2	Wedge	Ductile Iron Gr 500-7, EPDM encapsulated	AS 1831 AS 1646
3	Stem Nut	Bronze C95210	AS 1565
4	Stem	Stainless Steel Gr 431	ASTM A276
5	Bonnet Gasket	EPDM	AS 1646
6	Bolts - Bonnet, Dust Cover & Stem Cap	Stainless Steel Gr 316	ASTM A276
7	Bonnet	Ductile Iron Gr 500-7	AS 1831
8	O-Ring Seals	NBR	AS 1646
9	Bushing	Bronze C95210	AS 1565
10	O-Ring Seals	NBR	AS 1646
11	Bonnet O-Ring	NBR	AS 1646
12	Bearing		
13	Gland Flange	Ductile Iron Gr 500-7	AS 1831
14	Dust Cover	EPDM	AS 1646
15	Eyebolt	Carbon Steel	Galv
16	Bypass Valve	Resilient Seat PN16	AS2638.2
17	Flange Bolt/Nuts	Stainless Steel Gr 316	ASTM A276
18	Bypass Bend	Ductile Iron Gr 500-7	AS 1831



**FLANGE BYPASS PN16**

DN 450 - 600


**DIMENSIONS**

DN	Bypass DN	L1	L2	H1	H2	H3	D1	PCD	n-d	b	No Turns	Torque In Nm	Weight kg	ACC	CC
450	100	650	555	320	1069	920	640	584	12-26d	33	58	420	395	VGFB4510	VGFB4510C
600	150	785	830	412.5	1334	1185	825	756	16-30d	42	68	535	780	VGFB6015	VGFB6015C

## APPLICATIONS

Resilient seat gate valves comply with AS 2638.2 and are suitable for use in potable water, non-potable water and wastewater systems installed above ground and below ground.

## TECHNICAL DATA

Standard:	AS 2638.2		
Size Range:	DN 80 – DN 200 (Beta Valves)		
Pressures:	Operating Pressure	2500 kPa (PN 25)	
	Test Pressure – Seal	2750 kPa	
	Test Pressure – Body	3750 kPa	
Temperatures:	Max 80 deg C,		
	Max 40 deg C for potable water systems to AS 4020		
Coating:	Fusion Bonded coating to AS/NZS 4158		
End connections:	Flange (AS 2129 Table F)		
Closing options:	Anti-clockwise (ACC) and Clockwise closing (CC)		
Options:	Handwheels or Gearbox actuators		
	ISO flange for gearbox actuators		
	Extension spindles		

## FLANGE PN25

DN 80 - 200

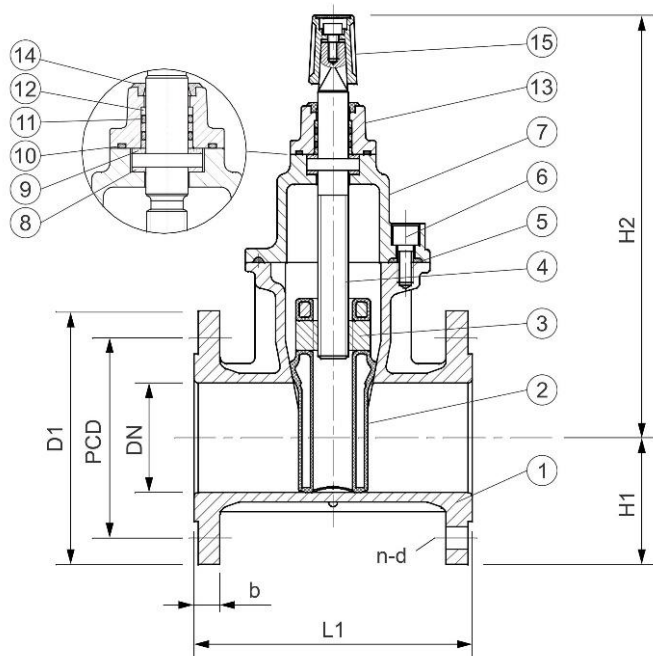


## FEATURES

- High strength and corrosion resistant materials
- EPDM encapsulated ductile iron wedge ensures effective sealing
- Full bore design eliminates blockages
- Anti-friction components for lower operating torques

## COMPONENTS

ITEM	PART	MATERIAL	STANDARD
1	Body	Ductile Iron Gr 500-7	AS 1831
2	Wedge	Ductile Iron Gr 500-7, EPDM encapsulated	AS 1831 AS 1646
3	Stem Nut	Bronze C95210	AS 1565
4	Stem	Stainless Steel Gr 431	ASTM A276
5	Bonnet Gasket	EPDM	AS 1646
6	Bolts - Bonnet, Dust Cover & Stem Cap	Stainless Steel Gr 316	ASTM A276
7	Bonnet	Ductile Iron Gr 500-7	AS 1831
8	Washer	EPDM	AS 1646
9	Washer	Bronze C95210	AS 1565
10	Bonnet O-Ring	NBR	AS 1646
11	O-Ring Seals	NBR	AS 1646
12	Thrust Collars	POM	AS 1646
13	Seal Retainer	Ductile Iron Gr 500-7	AS 1831
14	Dust Cover	EPDM	AS 1646
15	Stem Cap	Ductile Iron Gr 500-7	AS 1831



## DIMENSIONS

DN	L1	H1	H2	D1	PCD	n-d	b	No Turns	Torque In Nm	Weight kg	ACC	CC
80	203	103	225	205	165	8-18d	19	22	50	23	VGFH2508	VGFH2508C
100	229	115	340	230	191	8-18d	22	22	60	30	VGFH2510	VGFH2510C
150	267	153	450	305	260	12-22d	25	32	110	52	VGFH2515	VGFH2515C
200	292	185	580	370	324	12-22d	29	35	140	75	VGFH2520	VGFH2520C



## APPLICATIONS

Resilient seat gate valves comply with AS 2638.2 and are suitable for use in potable water, non-potable water and wastewater systems installed above ground and below ground.

## TECHNICAL DATA

Standard:	AS 2638.2 (Lic OMK25731) WSAA Product Appraisal 1121 Issue 8 – Beta Valves	
Size Range:	DN 100 – DN 375	
Pressures:	Operating Pressure	1600 kPa (PN 16)
	Test Pressure – Seal	1760 kPa
	Test Pressure – Body	2400 kPa
Temperatures:	Max 80 deg C, Max 40 deg C for potable water systems to AS 4020	
Coating:	Fusion Bonded coating to AS/NZS 4158	
End connections:	Socket (AS/NZS 2280)	
Closing options:	Anti-clockwise (ACC) and Clockwise closing (CC)	
Options:	Handwheels or Gearbox actuators ISO flange for gearbox actuators Extension spindles Socket Seal Ring to suit PVC Series 1	


**SOCKET PN16**

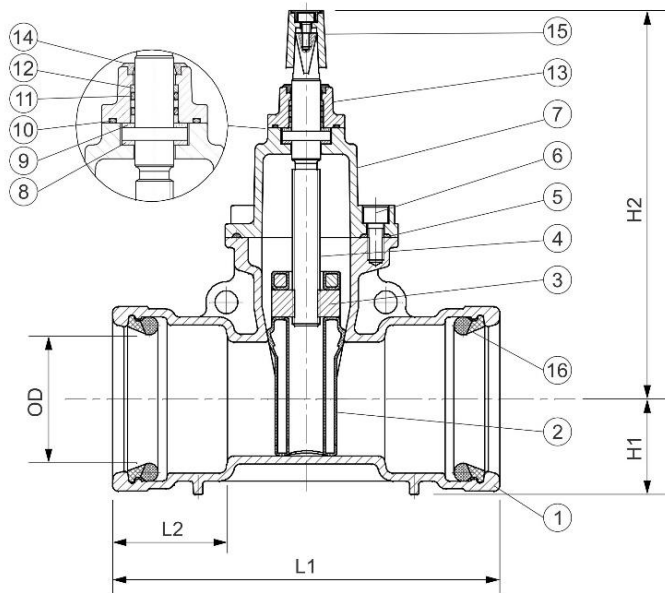
DN 100 - 375

## FEATURES

- High strength and corrosion resistant materials
- EPDM encapsulated ductile iron wedge ensures effective sealing
- Full bore design eliminates blockages
- Anti-friction components for lower operating torques

## COMPONENTS

ITEM	PART	MATERIAL	STANDARD
1	Body	Ductile Iron Gr 500-7	AS 1831
2	Wedge	Ductile Iron Gr 500-7, EPDM encapsulated	AS 1831 AS 1646
3	Stem Nut	DR Brass C48600	AS 1568
4	Stem	Stainless Steel Gr 431	ASTM A276
5	Bonnet Gasket	EPDM	AS 1646
6	Bolts - Bonnet, Dust Cover & Stem Cap	Stainless Steel Gr 316	ASTM A276
7	Bonnet	Ductile Iron Gr 500-7	AS 1831
8	Washer	EPDM	AS 1646
9	Washer	DR Brass C48600	AS 1568
10	Bonnet O-Ring	NBR	AS 1646
11	O-Ring Seals	NBR	AS 1646
12	Thrust Collars	POM	AS 1646
13	Seal Retainer	DN80-150 - SS Gr 316 Other sizes - DI Gr 500-7	ASTM A276 AS 1831
14	Dust Cover	EPDM	AS 1646
15	Stem Cap	Ductile Iron Gr 500-7	AS 1831
16	Socket Seal Ring	EPDM	AS 1646



## DIMENSIONS

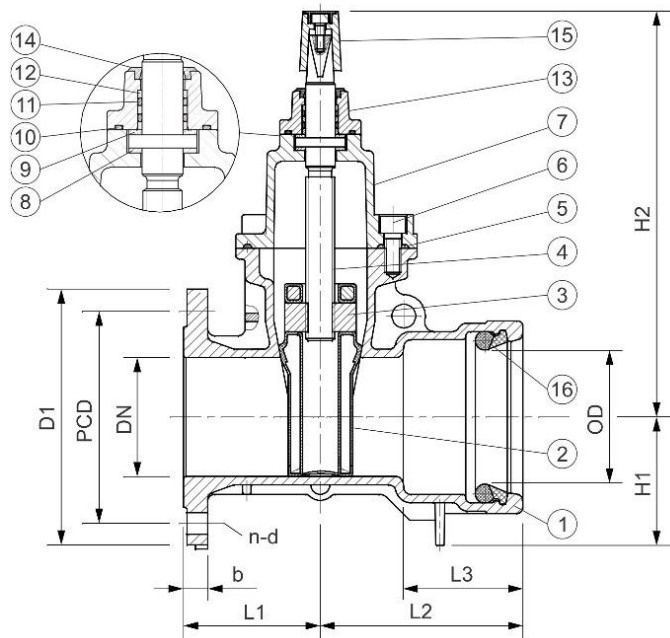
DN	OD	L1	L2	H1	H2	No Turns	Torque In Nm	Weight kg	ACC	CC
100	122	342	100	87	330	22	60	24	VGS10	VGS10C
150	177	372	105	117	420	32	110	46	VGS15	VGS15C
200	232	456	120	144	580	35	140	71	VGS20	VGS20C
225	259	477	135	158	675	43	200	86	VGS22	VGS22C
250	286	482	144	172	675	43	200	92	VGS25	VGS25C
300	345	520	144	203	752	44	220	138	VGS30	VGS30C
375	426	600	172	250	1035	55	310	295	VGS37	VGS37C

## APPLICATIONS

Resilient seat gate valves comply with AS 2638.2 and are suitable for use in potable water, non-potable water and wastewater systems installed above ground and below ground.

## TECHNICAL DATA

Standard:	AS 2638.2 (Lic OMK25731) WSAA Product Appraisal 1121 Issue 8 – Beta Valves	
Size Range:	DN 100 – DN 150	
Pressures:	Operating Pressure	1600 kPa (PN 16)
	Test Pressure – Seal	1760 kPa
	Test Pressure – Body	2400 kPa
Temperatures:	Max 80 deg C, Max 40 deg C for potable water systems to AS 4020	
Coating:	Fusion Bonded coating to AS/NZS 4158	
End connections:	Flange (AS 4087, PN16), Socket (AS/NZS 2280)	
Closing options:	Anti-clockwise (ACC) and Clockwise closing (CC)	
Options:	Handwheels or Gearbox actuators ISO flange for gearbox actuators Extension spindles Socket Seal Ring to suit PVC Series 1	



## DIMENSIONS

DN	OD	L1	L2	L3	H1	H2	D1	PCD	n-d	b	No Turns	Torque In Nm	Weight kg	ACC	CC
100	122	115	205	135	108	365	215	178	4-18d	20	22	60	24	VGSF10	VGSF10C
150	177	134	232	150	140	470	280	235	8-18d	23	32	110	46	VGSF15	VGSF15C

## SOCKET FLANGE PN16

DN 100 - 150



## FEATURES

- High strength and corrosion resistant materials
- EPDM encapsulated ductile iron wedge ensures effective sealing
- Full bore design eliminates blockages
- Anti-friction components for lower operating torques

## COMPONENTS

ITEM	PART	MATERIAL	STANDARD
1	Body	Ductile Iron Gr 500-7	AS 1831
2	Wedge	Ductile Iron Gr 500-7, EPDM encapsulated	AS 1831 AS 1646
3	Stem Nut	DR Brass C48600	AS 1568
4	Stem	Stainless Steel Gr 431	ASTM A276
5	Bonnet Gasket	EPDM	AS 1646
6	Bolts - Bonnet, Dust Cover & Stem Cap	Stainless Steel Gr 316	ASTM A276
7	Bonnet	Ductile Iron Gr 500-7	AS 1831
8	Washer	EPDM	AS 1646
9	Washer	DR Brass C48600	AS 1568
10	Bonnet O-Ring	NBR	AS 1646
11	O-Ring Seals	NBR	AS 1646
12	Thrust Collars	POM	AS 1646
13	Seal Retainer	DN 80-200: SS Gr 316 Other sizes: DI Gr 500-7	ASTM A276 AS 1831
14	Dust Cover	EPDM	AS 1646
15	Stem Cap	Ductile Iron Gr 500-7	AS 1831
16	Socket Seal Ring	EPDM	AS 1646

## APPLICATIONS

Resilient seat gate valves comply with AS 2638.2 and are suitable for use in potable water, non-potable water and wastewater systems installed above ground and below ground.

## TECHNICAL DATA

Standard:	AS 2638.2 (Lic OMK25731) WSAA Product Appraisal 1121 Issue 8 – Beta Valves	
Size Range:	DN 100 – DN 150	
Pressures:	Operating Pressure	1600 kPa (PN 16)
	Test Pressure – Seal	1760 kPa
	Test Pressure – Body	2400 kPa
Temperatures:	Max 80 deg C, Max 40 deg C for potable water systems to AS 4020	
Coating:	Fusion Bonded coating to AS/NZS 4158	
End connections:	Spigot (AS/NZS 2280)	
Closing options:	Anti-clockwise (ACC) and Clockwise closing (CC)	
Options:	Handwheels or Gearbox actuators ISO flange for gearbox actuators Extension spindles	

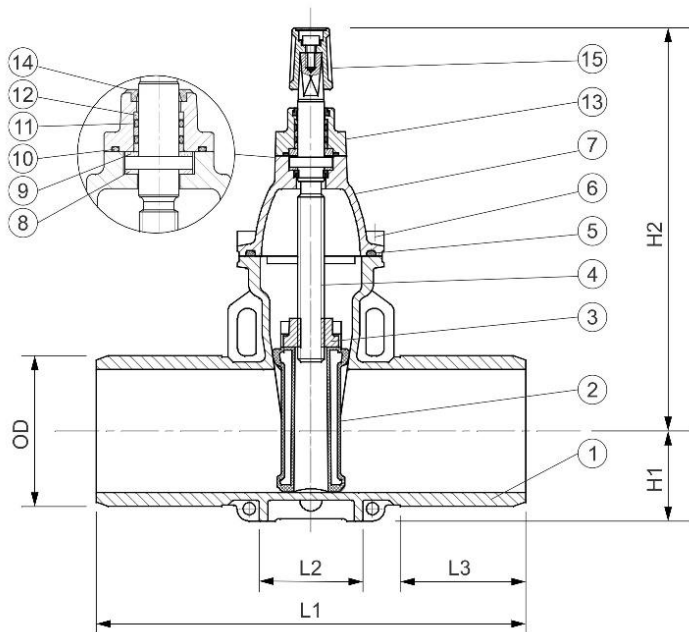


**SPIGOT PN16**  
DN 100 - 150

## FEATURES

- High strength and corrosion resistant materials
- EPDM encapsulated ductile iron wedge ensures effective sealing
- Full bore design eliminates blockages
- Anti-friction components for lower operating torques

## COMPONENTS



ITEM	PART	MATERIAL	STANDARD
1	Body	Ductile Iron Gr 500-7	AS 1831
2	Wedge	Ductile Iron Gr 500-7, EPDM encapsulated	AS 1831 AS 1646
3	Stem Nut	DR Brass C48600	AS 1568
4	Stem	Stainless Steel Gr 431	ASTM A276
5	Bonnet Gasket	EPDM	AS 1646
6	Bolts - Bonnet, Dust Cover & Stem Cap	Stainless Steel Gr 316	ASTM A276
7	Bonnet	Ductile Iron Gr 500-7	AS 1831
8	Washer	EPDM	AS 1646
9	Washer	DR Brass C48600	AS 1568
10	Bonnet O-Ring	NBR	AS 1646
11	O-Ring Seals	NBR	AS 1646
12	Thrust Collars	POM	AS 1646
13	Seal Retainer	DN80-150 - SS Gr 316 Other sizes - DI Gr 500-7	ASTM A276 AS 1831
14	Dust Cover	EPDM	AS 1646
15	Stem Cap	Ductile Iron Gr 500-7	AS 1831

## DIMENSIONS

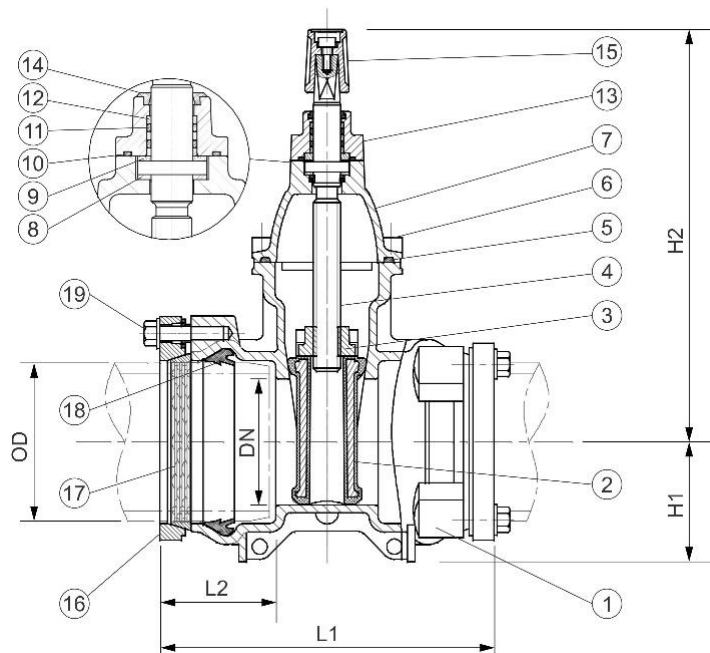
DN	OD	L1	L2	L3	H1	H2	No Turns	Torque In Nm	Weight kg	ACC	CC
100	122	345	80	102	90	340	22	60	17	VGP10	VGP10C
150	177	365	104	102	115	450	32	110	28	VGP15	VGP15C

## APPLICATIONS

PE Restraint resilient seat gate valves comply with AS 2638.2 and are suitable for PE pipelines in potable water, non-potable water and wastewater systems installed above ground and below ground.

## TECHNICAL DATA

Standard:	AS 2638.2 (Lic OMK25731) WSAA Appraisal 1121 Issue 8 – Beta Valves (OD 90-180)	
Size Range:	OD 90 – OD 280	
Pressures:	Operating Pressure	1600 kPa (PN 16)
	Test Pressure – Seal	1760 kPa
	Test Pressure – Body	2400 kPa
Temperatures:	Max 80 deg C, Max 40 deg C for potable water systems to AS 4020	
Coating:	Fusion Bonded coating to AS/NZS 4158	
End connections:	Mechanical Restraint for PE pipes (PN 12.5 or PN 16)	
Closing options:	Anti-clockwise (ACC) and Clockwise closing (CC)	
Options:	Handwheels or Gearbox actuators ISO flange for gearbox actuators Extension spindles	



## PE RESTRAINT PN16

OD 90 - 280



## FEATURES

- High strength and corrosion resistant materials
- EPDM encapsulated ductile iron wedge ensures effective sealing
- Full bore design eliminates blockages
- Anti-friction components for lower operating torques

## COMPONENTS

ITEM	PART	MATERIAL	STANDARD
1	Body	Ductile Iron Gr 500-7	AS 1831
2	Wedge	Ductile Iron Gr 500-7, EPDM encapsulated	AS 1831 AS 1646
3	Stem Nut	DR Brass C48600	AS 1568
4	Stem	Stainless Steel Gr 431	ASTM A276
5	Bonnet Gasket	EPDM	AS 1646
6	Bolts - Bonnet, Dust Cover & Stem Cap	Stainless Steel Gr 316	ASTM A276
7	Bonnet	Ductile Iron Gr 500-7	AS 1831
8	Washer	EPDM	AS 1646
9	Washer	DR Brass C48600	AS 1568
10	Bonnet O-Ring	NBR	AS 1646
11	O-Ring Seals	NBR	AS 1646
12	Thrust Collars	POM	AS 1646
13	Seal Retainer	DN80-150 - SS Gr 316 Other sizes - DI Gr 500-7	ASTM A276 AS 1831
14	Dust Cover	EPDM	AS 1646
15	Stem Cap	Ductile Iron Gr 500-7	AS 1831
16	End Ring	Ductile Iron Gr 500-7	AS 1831
17	Grip Ring	Brass C37710	AS1568
18	Seal Ring	EPDM	AS1646
19	Bolt & Washer	Stainless Steel Gr 316	ASTM A276

OD	DN	L1	L2	H1	H2	No Turns	Torque In Nm	Weight kg	ACC	CC
90	80	252	88	72	310	17	50		VGG090	VGG090C
125	100	260	88	95	330	21	65		VGG125	VGG125C
180	150	355	118	120	420	31	110		VGG180	VGG180C
250	250	410	148	160	670	43	200		VGG250	VGG250C
280	250	422	152	180	670	43	200		VGG280	VGG280C

## RIISING SPINDLE PN16

DN 80 - 300

### APPLICATIONS

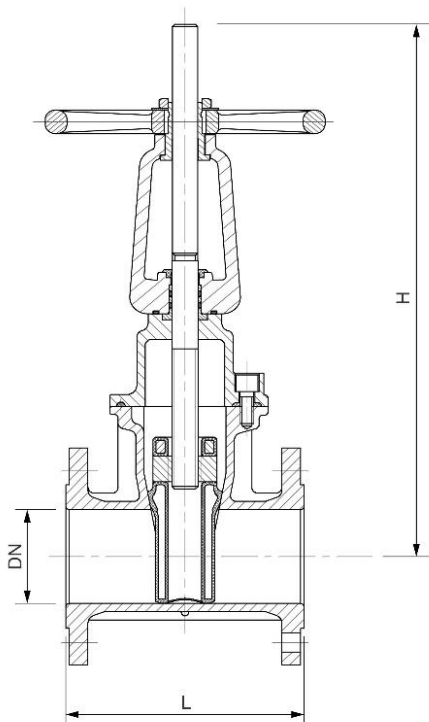
Resilient seated rising spindle gate valves comply with AS 2638.2 and are suitable for use in potable water, non-potable water and wastewater systems installed above ground.

### TECHNICAL DATA

Standard:	AS 2638.2	
Size Range:	DN 80 – DN 300	
Pressures:	Operating Pressure	1600 kPa (PN 16)
	Test Pressure – Seal	1760 kPa
	Test Pressure – Body	2400 kPa
Temperatures:	Max 40 deg C	
Coating:	Fusion Bonded coating to AS/NZS 4158	
End connections:	Flange (AS 4087, PN16), (AS 2129 T/E)	
Actuation:	Handwheel – Clockwise closing	

### FEATURES

- High strength and corrosion resistant materials
- EPDM encapsulated ductile iron wedge ensures effective sealing
- Full bore design eliminates blockages
- Anti-friction components for lower operating torques



### COMPONENTS

PART	MATERIAL	STANDARD
Body, Bonnet, Yoke, Handwheel	Ductile Iron Gr 500-7	AS 1831
Wedge	Ductile Iron Gr 500-7, EPDM encapsulated	AS 1831 AS 1646
Stem - Spindle	Stainless Steel Gr 431	ASTM A276
Stem Nut, Thrust Collar, Seal Retainer	Gunmetal C83600	AS 1565
O-Ring Seals	NBR	AS 1646
Gaskets	EPDM	AS 1646
Fasteners, Pins	Stainless Steel Gr 316	ASTM A276
Gaskets	EPDM	AS 1646

### DIMENSIONS

DN	L	H (Open)	H (Closed)	PN16 FLANGE	T/E FLANGE
80	203	520	425	VGO08	VGO08E
100	229	590	485	VGO10	VGO10E
150	267	770	630	VGO15	VGO15E
200	292	930	720	VGO20	VGO20E
250	330	1200	940	VGO25	VGO25E
300	356	1390	1080	VGO30	VGO30E

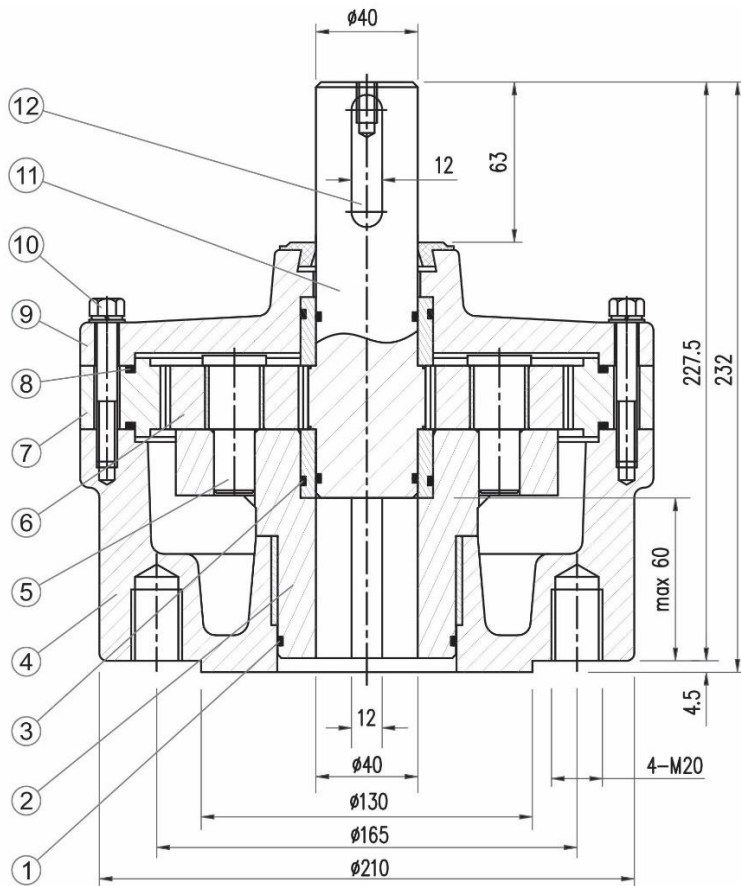
## APPLICATIONS

The Beta Planet Stem Gearbox is compatible with the Beta resilient seat gate valves – Series VGF & VGFB DN450-600.

The valve and gearbox are suitable for use in potable water, non-potable water and wastewater systems installed above ground and below ground.

## TECHNICAL DATA

Mounting Flange:	F16 ISO 5211 Flange
Gear Ratio:	4.16 : 1
Operation:	Suits Clockwise and Anti-clockwise closing valves
Protection:	IP67 to AS 60529
Coating:	Fusion Bonded coating to AS/NZS 4158
Pressures:	1600 kPa (PN 16)
Compatible Range:	Betta resilient seat gate valves Series VGF & VGFB, DN 450 – DN 600
Options:	Stem Cap, Handwheels or Extension spindles



## COMPONENTS

ITEM	PART	MATERIAL
1	O-Ring Seals	NBR
2	Plate with Stem	Ductile Iron Gr 500-7
3	Bushing & O-Rings	Brass C48600 & NBR
4	Gear Body	Ductile Iron Gr 500-7
5	Stems	Stainless Steel Gr 420 2Cr13
6	Gears	Heat Treated Steel 45
7	Annular Gear	Heat Treated Steel 45
8	O-Ring Seals	NBR
9	Bonnet	Ductile Iron Gr 500-7
10	Bolts & Washers	Stainless Steel Gr 316
11	Main Stem	Stainless Steel Gr 431
12	Stem Key	Stainless Steel Gr 316

## INSTALLATION

The PGS02 gearbox can be installed onto a Beta gate valve model VGF or VGFB with compatible ISO F16 mounting flange as follows:

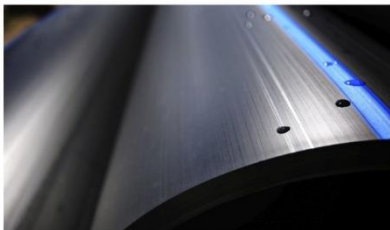
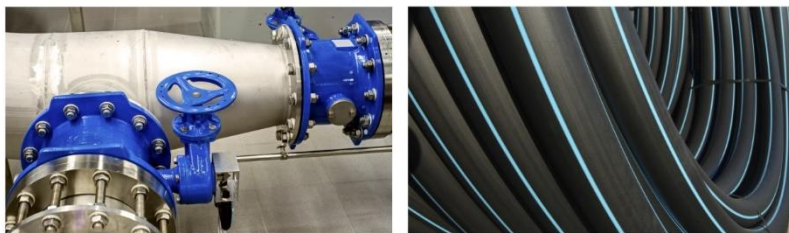
1. Ensure the gate valve stem key is in position.
2. Make sure the valve stem key and the keyway of the gearbox is in alignment.
3. With a little force, lower the gearbox onto the valve stem until it is fully seated.
4. Rotate the gearbox to align the mounting flange bolt holes.
5. Insert mounting bolts & washers, and hand tighten.
6. Torque each bolt in even increments to 200Nm.

## OPERATING TORQUES

GATE VALVE			GEARBOX			VALVE WITH GEARBOX
DN	SERIES	OPERATING TORQUE	SERIES	GEAR RATIO	MAX ALLOW INPUT TORQUE	OPERATING TORQUE
450	VGF, VGFB	400 Nm	PGS02	4.16 : 1	450 Nm Max	100 Nm
500	VGF, VGFB	460 Nm	PGS02	4.16 : 1	500 Nm Max	115 Nm
600	VGF, VGFB	480 Nm	PGS02	4.16 : 1	600 Nm Max	120 Nm



[www.civilpipes.com.au](http://www.civilpipes.com.au)



## CIVILPIPES PTY LTD

ABN 30 168 566 667  
2 Potassium St. Narangba Qld 4504  
PO Box 304 North Lakes Qld 4509

## CONTACT

T: 07 3053 3456  
E: [sales@civilpipes.com.au](mailto:sales@civilpipes.com.au) (Sales)  
E: [admin@civilpipes.com.au](mailto:admin@civilpipes.com.au) (General)



The products shown form part of our continuous improvement program and as such the product specifications may be changed without notice. All warranties relating to accuracy, completeness, or suitability for any particular purpose and all liability for any loss, damage or costs incurred relating to the use of this information are excluded.  
© CIVILPIPES 2022 All Rights Reserved.