

APPLICATIONS

WAGA Multi/Joint End Caps are suitable for use in potable water; non-potable water and wastewater pipelines.

The end cap has full restraint capability and can join all rigid and flexible pipe materials.

Suitable for below ground and above ground applications.

TECHNICAL DATA

| | |
|---------------------|---|
| Size Range | DN 50 to DN 400 |
| Working Pressure: | |
| - DN 50 to DN 300 | PN16 (Water) |
| - DN 350 to DN 400 | PN10 (Water) |
| Working Temperature | -5 to 50 deg C (Water) |
| Mechanical Joint | Full Restraint with Uni/Fiks Rings |
| Deflection | 8 deg Max per end connection (based on middle of range) |
| Options: | BSP Threaded Outlet 2" |

Refer to [WAGA MULTI/JOINT 3000 Product Guide](#) for further technical data. Contact us or download from www.civilpipes.com.au.



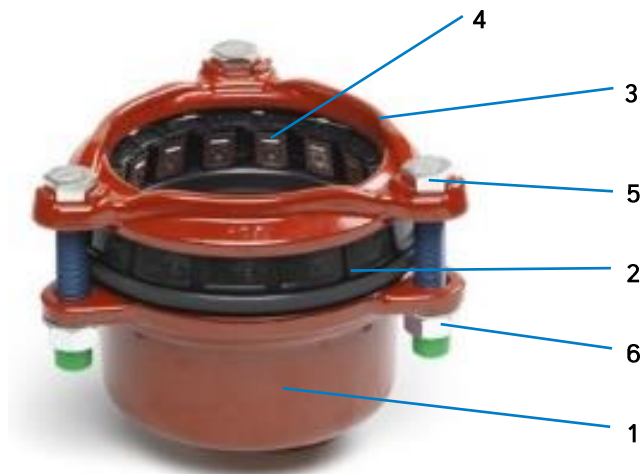
FEATURES

The wide range sealing system makes this product ideal for joining PE, PVC-O, PVC-M, PVC-U, GRP, DI, CI, AC, and Steel pipelines.

Unique sealing system that comprises an EPDM seal with flexible ring (Uni/Fiks) that consists of plastic segments with stainless steel grippers to secure the pipe joint. With the Uni/Fiks ring, all joints can be made restraint as long as the nominal diameters are the same.

Corrosion resistant materials suitable for drinking water and wastewater applications.

Can be installed without disassembling which makes installation faster and easier.

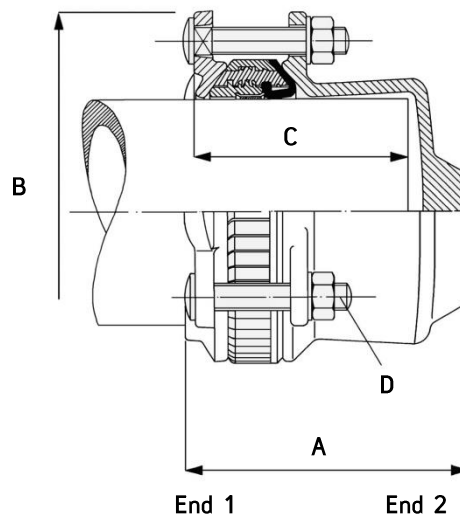


INSERT STIFFENER
(PE/PVC pipe ends)

COMPONENTS

| ITEM | PART | MATERIAL | STANDARD |
|------|------------------------------|-----------------------------------|---------------------------|
| 1 | Body | Ductile Iron GGG45 epoxy coated | EN-GJS-450-10, AS/NZS4158 |
| 2 | Varioseal | EPDM | AS 681.1 |
| 3 | Clamp Ring | Ductile Iron GGG45 epoxy coated | EN-GJS-450-10, AS/NZS4158 |
| 4 | Uni/Fiks Ring - Plastic Ring | POM/Polyamide (Uni/Fleks) | |
| | - Metal Grippers | 316 Stainless Steel (Uni/Fiksers) | AISI 316 |
| 5 | Bolts | 316 Stainless Steel, PTFE Coated | AISI 316 |
| 6 | Nuts & Washers | 316 Stainless Steel | AISI 316 |

3207 RESTRAINT END CAP (BLANK)

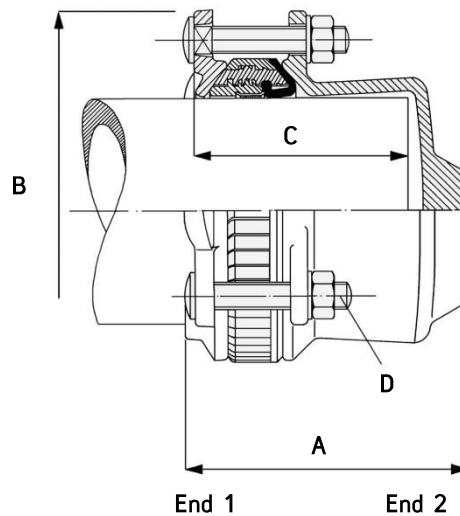


| Prod Code | Nom Dia | Size Range | | A | B | C | D | Angular Deflection | PN Water | Weight |
|-----------|---------|------------|-------|---------|-----|-----|----------|--------------------|----------|--------|
| | DN | End 1 | End 2 | mm | mm | mm | | (Note 1) | kPa | kg |
| DGWB050 | 50 | 46 - 71 | Blank | 115-130 | 164 | 100 | 3 - M12 | 8 deg | 1600 | 3.5 |
| DGWB065 | 65 | 63 - 90 | Blank | 145-157 | 186 | 95 | 3 - M12 | 8 deg | 1600 | 4.1 |
| DGWB080 | 80 | 84 - 105 | Blank | 142-156 | 204 | 115 | 3 - M12 | 8 deg | 1600 | 5.1 |
| DGWB100 | 100 | 104 - 132 | Blank | 144-163 | 236 | 110 | 3 - M16 | 8 deg | 1600 | 6.5 |
| DGWB125 | 125 | 132 - 155 | Blank | 151-169 | 264 | 120 | 4 - M16 | 8 deg | 1600 | 7.8 |
| DGWB150 | 150 | 154 - 192 | Blank | 149-177 | 304 | 120 | 4 - M16 | 8 deg | 1600 | 9.6 |
| DGWB200 | 200 | 192 - 232 | Blank | 180-207 | 354 | 140 | 6 - M16 | 8 deg | 1600 | 18.3 |
| DGWB225 | 225 | 230 - 268 | Blank | 211-242 | 386 | 145 | 6 - M20 | 8 deg | 1600 | 20.9 |
| DGWB250 | 250 | 267 - 310 | Blank | 214-249 | 432 | 170 | 6 - M20 | 8 deg | 1600 | 27.1 |
| DGWB300 | 300 | 315 - 356 | Blank | 219-254 | 490 | 170 | 8 - M20 | 8 deg | 1600 | 34.4 |
| DGWB400 | 400 | 392 - 433 | Blank | 253-295 | 574 | 205 | 10 - M20 | 8 deg | 1000 | 43.1 |

NOTES

- Installation: Refer to the [GF WAGA MULTI/JOINT Installation Guide](#) for details of required pipe gap, minimum insertion dimensions, torque settings and general assembly instructions.
- Refer to the [GF SS Insert Stiffener Guide](#) for details of when and why inserts are required.

3207T RESTRAINT END CAP (THREADED OUTLET)



| Prod Code | Nom Dia | Size Range | | A mm | B mm | C mm | D | Angular Deflection (Note 1) | PN Water kPa | Weight kg |
|-----------|---------|------------|--------|---------|---------|---------|----------|-----------------------------------|--------------------|--------------|
| | DN | End 1 | End 2 | | | | | | | |
| DGWB05050 | 50 | 46 - 71 | 2" BSP | 115-130 | 164 | 100 | 3 - M12 | 8 deg | 1600 | 3.5 |
| DGWB06550 | 65 | 63 - 90 | 2" BSP | 145-157 | 186 | 95 | 3 - M12 | 8 deg | 1600 | 4.1 |
| DGWB08050 | 80 | 84 - 105 | 2" BSP | 142-156 | 204 | 115 | 3 - M12 | 8 deg | 1600 | 5.1 |
| DGWB10050 | 100 | 104 - 132 | 2" BSP | 144-163 | 236 | 110 | 3 - M16 | 8 deg | 1600 | 6.5 |
| DGWB12550 | 125 | 132 - 155 | 2" BSP | 151-169 | 264 | 120 | 4 - M16 | 8 deg | 1600 | 7.8 |
| DGWB15050 | 150 | 154 - 192 | 2" BSP | 149-177 | 304 | 120 | 4 - M16 | 8 deg | 1600 | 9.6 |
| DGWB20050 | 200 | 192 - 232 | 2" BSP | 180-207 | 354 | 140 | 6 - M16 | 8 deg | 1600 | 18.3 |
| DGWB22550 | 225 | 230 - 268 | 2" BSP | 211-242 | 386 | 145 | 6 - M20 | 8 deg | 1600 | 20.9 |
| DGWB25050 | 250 | 267 - 310 | 2" BSP | 214-249 | 432 | 170 | 6 - M20 | 8 deg | 1600 | 27.1 |
| DGWB30050 | 300 | 315 - 356 | 2" BSP | 219-254 | 490 | 170 | 8 - M20 | 8 deg | 1600 | 34.4 |
| DGWB40050 | 400 | 392 - 433 | 2" BSP | 253-295 | 574 | 205 | 10 - M20 | 8 deg | 1000 | 43.1 |

NOTES

- Installation: Refer to the [GF WAGA MULTI/JOINT Installation Guide](#) for details of required pipe gap, minimum insertion dimensions, torque settings and general assembly instructions.
- Refer to the [GF SS Insert Stiffener Guide](#) for details of when and why inserts are required.

CIVILPIPES PTY LTD

ABN 30 168 566 667
2 Potassium St. Narangba Qld 4504
PO Box 304, North Lakes Qld 4509

CONTACT

T: +61 7 3053 3456
E: sales@civilpipes.com.au
W: www.civilpipes.com.au

